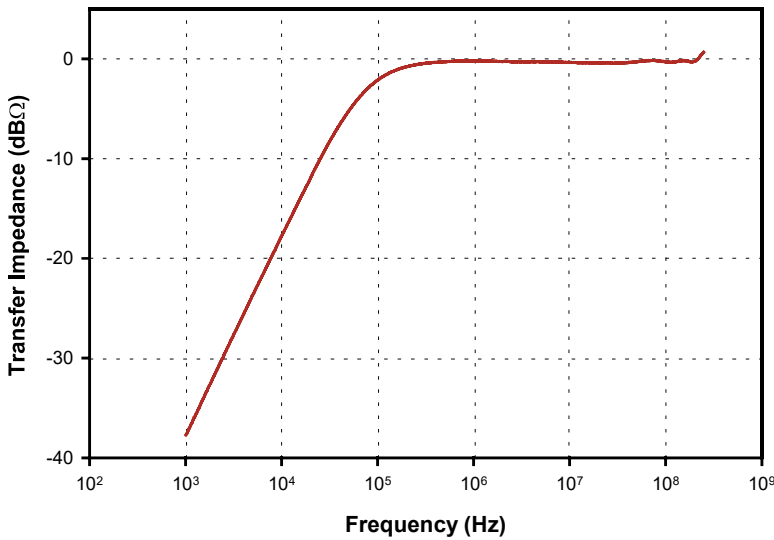
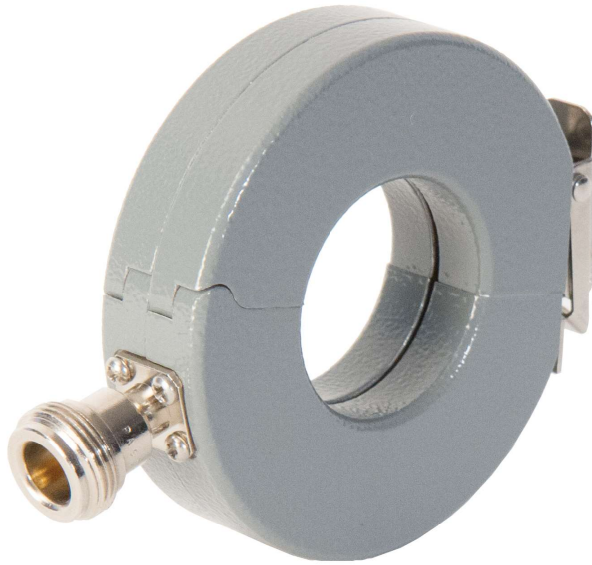


## CURRENT PROBE

The F-33-2 is for laboratory and field testing. The useable frequency range of this probe is 1 kHz – 250 MHz. A typical calibration curve is shown below. This probe has a small outer diameter, approximately 71 mm with an internal diameter of 32 mm.



### Specifications

Frequency:	1 kHz – 250 MHz
Internal diameter:	32 mm
External diameter:	71 mm
Height:	19 mm
$Z_t \Omega^1$ :	1
dBΩ <sup>1</sup> :	0
Connector:	Type-N
DC to 400 Hz:	100 amperes
RF(CW):	2 amperes
Peak Pulse Current <sup>2</sup> :	50 amperes

1: Probe calibrated with 50 Ω + j0Ω Load Impedance.  
2: Depends upon the pulse width and pulse rep. rate.